

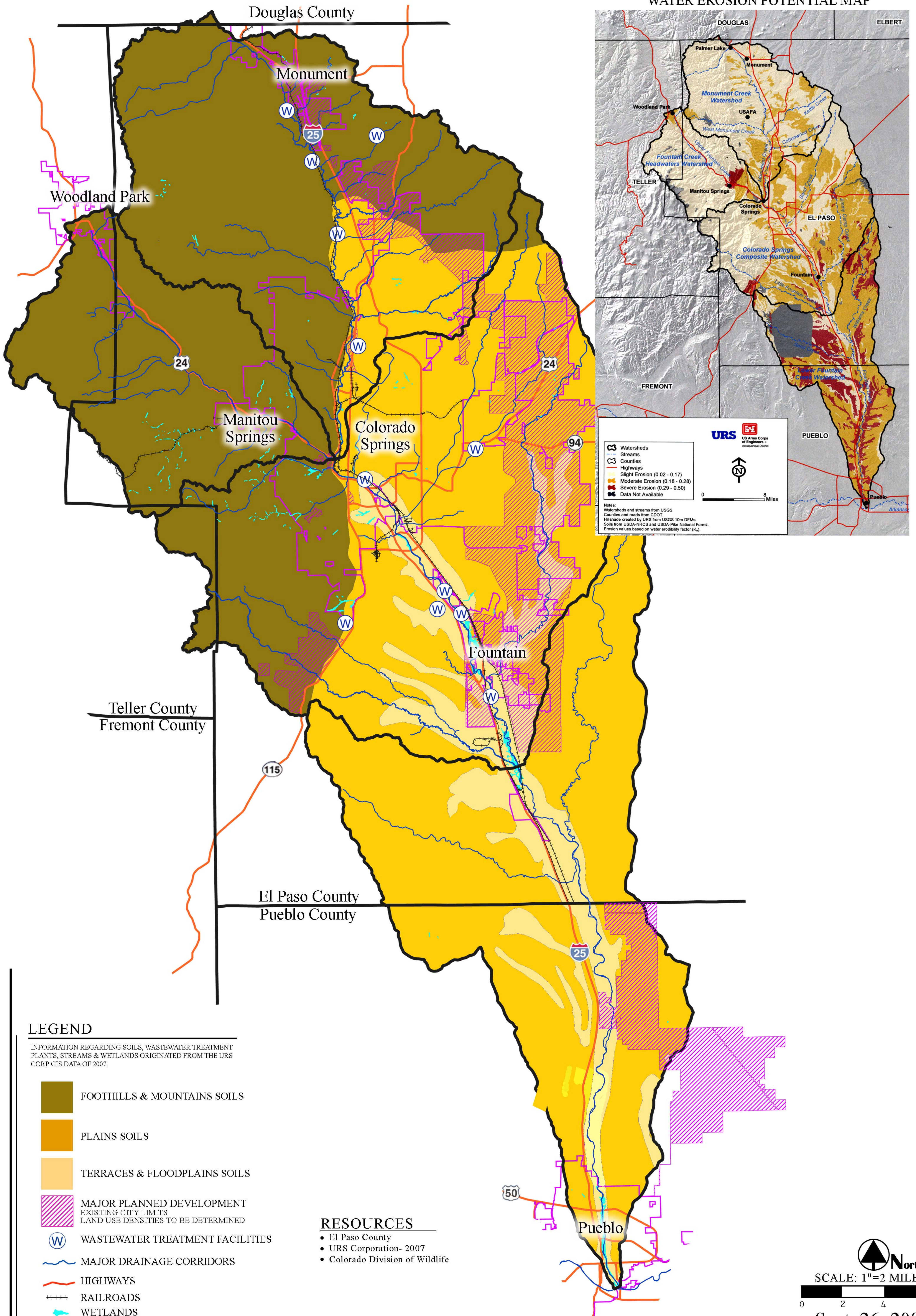
APPENDIX A

Maps

Map 1:	Benchmarks
Map 2:	Environmental Threats
Map 3:	Impervious Surface Area
Map 4:	Land Use Vision
Map 5:	Positive Environmental Attributes
Map 6:	Vision
Map 7:	Watershed Base Map

FOUNTAIN CREEK VISION TASK FORCE

WATER EROSION POTENTIAL MAP



URS
US Army Corps of Engineers - Albuquerque District

Legend:

- Watersheds
- Streams
- Counties
- Highways
- Slight Erosion (0.02 - 0.17)
- Moderate Erosion (0.18 - 0.28)
- Severe Erosion (0.29 - 0.50)
- Data Not Available

Notes:
Watersheds and streams from USGS.
Counties and roads from CDOT.
Hillslope created by URS from USGS 10m DEMs.
Soils from USDA-NRCS and USDA-Pike National Forest.
Erosion values based on water erodibility factor (K_a).

Scale: 0 to 8 Miles

LEGEND

INFORMATION REGARDING SOILS, WASTEWATER TREATMENT PLANTS, STREAMS & WETLANDS ORIGINATED FROM THE URS CORP GIS DATA OF 2007.

- FOOTHILLS & MOUNTAINS SOILS
- PLAINS SOILS
- TERRACES & FLOODPLAINS SOILS
- MAJOR PLANNED DEVELOPMENT
EXISTING CITY LIMITS
LAND USE DENSITIES TO BE DETERMINED
- W WASTEWATER TREATMENT FACILITIES
- MAJOR DRAINAGE CORRIDORS
- HIGHWAYS
- RAILROADS
- WETLANDS

RESOURCES

- El Paso County
- URS Corporation- 2007
- Colorado Division of Wildlife

Benchmark Considerations Map

North

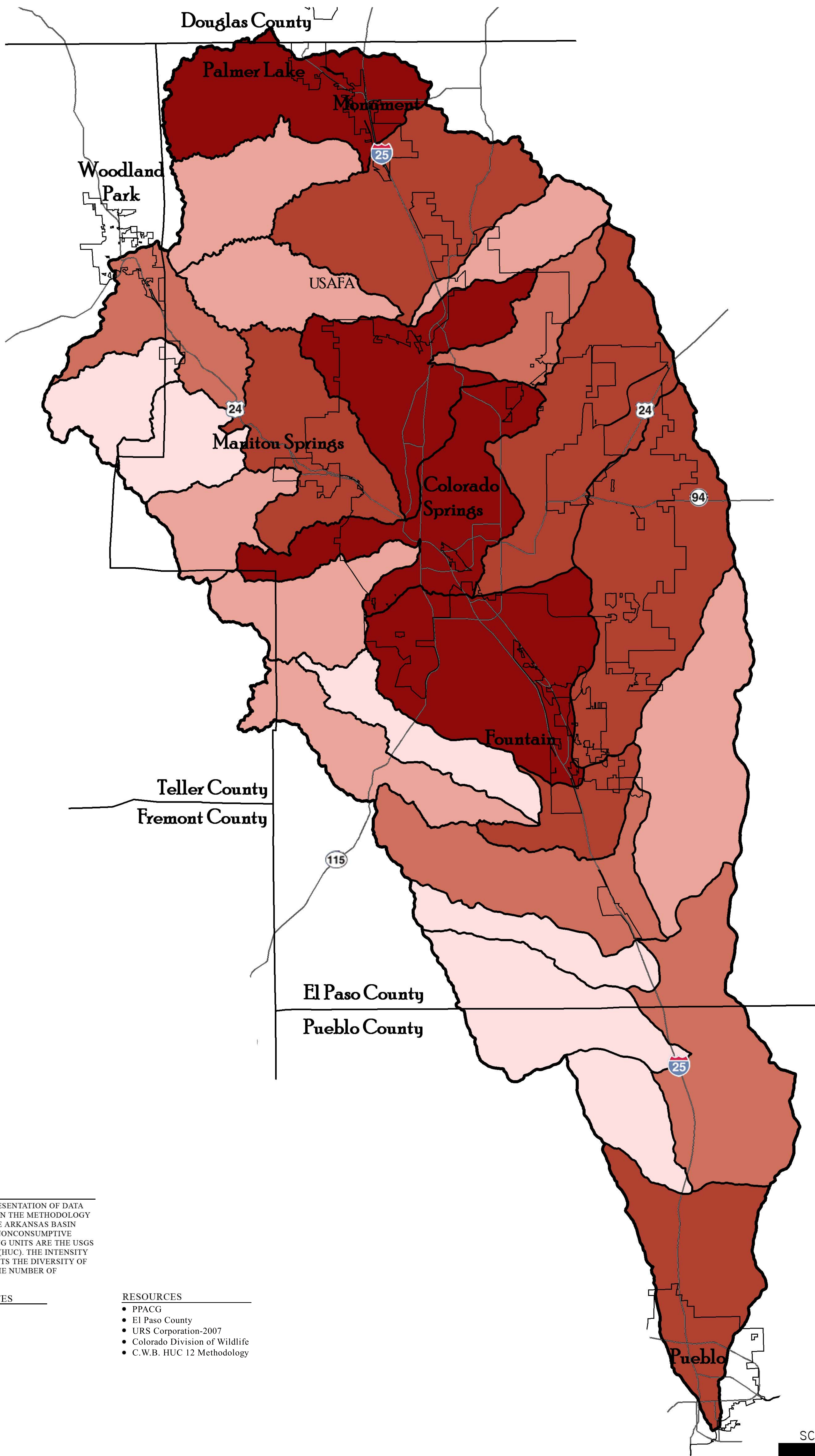
SCALE: 1"=2 MILES

0 2 4 6

Sept. 26, 2008

THOMAS THOMAS

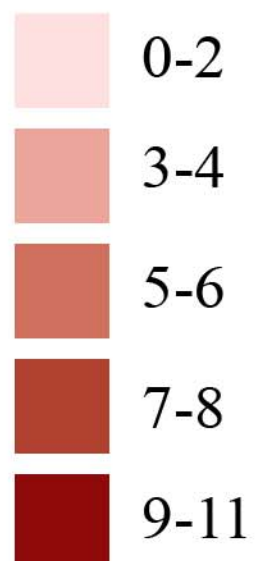
FOUNTAIN CREEK VISION TASK FORCE



LEGEND

THE FOLLOWING PRESENTATION OF DATA WAS ESTABLISHED ON THE METHODOLOGY FORMALIZED BY THE ARKANSAS BASIN ROUND TABLE FOR NONCONSUMPTIVE WATER USE. MAPPING UNITS ARE THE USGS HYDROLOGIC CODE (HUC). THE INTENSITY OF MAPPING REFLECTS THE DIVERSITY OF ATTRIBUTES, NOT THE NUMBER OF ACCURANCES.

TOTAL ATTRIBUTES



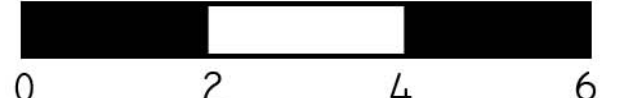
RESOURCES

- PPACG
- El Paso County
- URS Corporation-2007
- Colorado Division of Wildlife
- C.W.B. HUC 12 Methodology

Environmental Threat Attributes Map



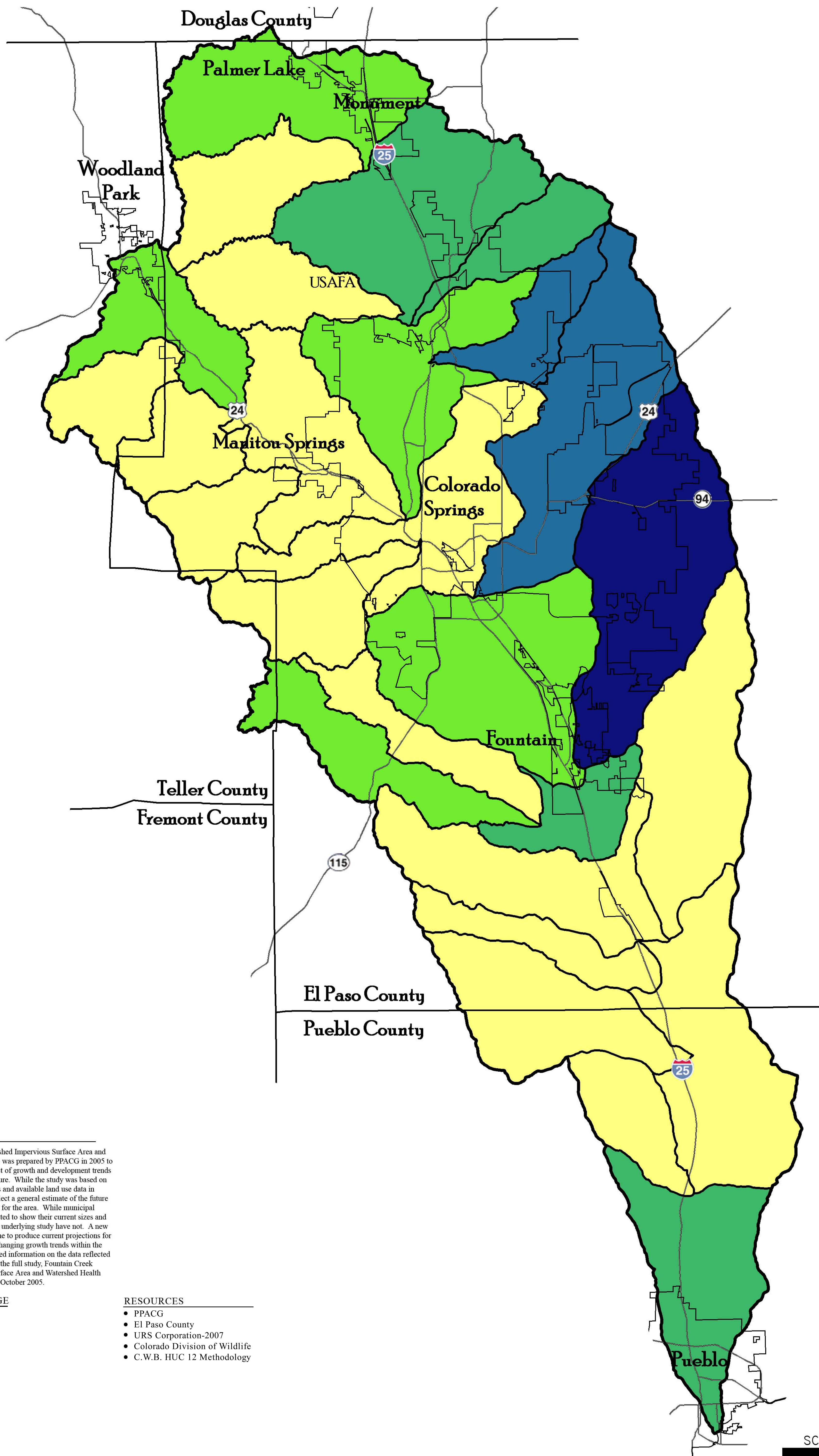
SCALE: 1"=2 MILES



Sept. 26, 2008

THOMAS THOMAS

FOUNTAIN CREEK VISION TASK FORCE



LEGEND

The Fountain Creek Watershed Impervious Surface Area and Watershed Health Analysis was prepared by PPACG in 2005 to explore the potential impact of growth and development trends on the watershed in the future. While the study was based on current development trends and available land use data in 2002, the findings only reflect a general estimate of the future patterns and rate of growth for the area. While municipal boundaries have been updated to show their current sizes and locations, the results of the underlying study have not. A new study would need to be done to produce current projections for imperviousness based on changing growth trends within the watershed. For more detailed information on the data reflected in this map, please refer to the full study, Fountain Creek Watershed, Impervious Surface Area and Watershed Health Analysis, Report, PPACG, October 2005.

PERCENT CHANGE

- 0%
- 1-3%
- 7-11%
- 15-16%
- 30%

RESOURCES

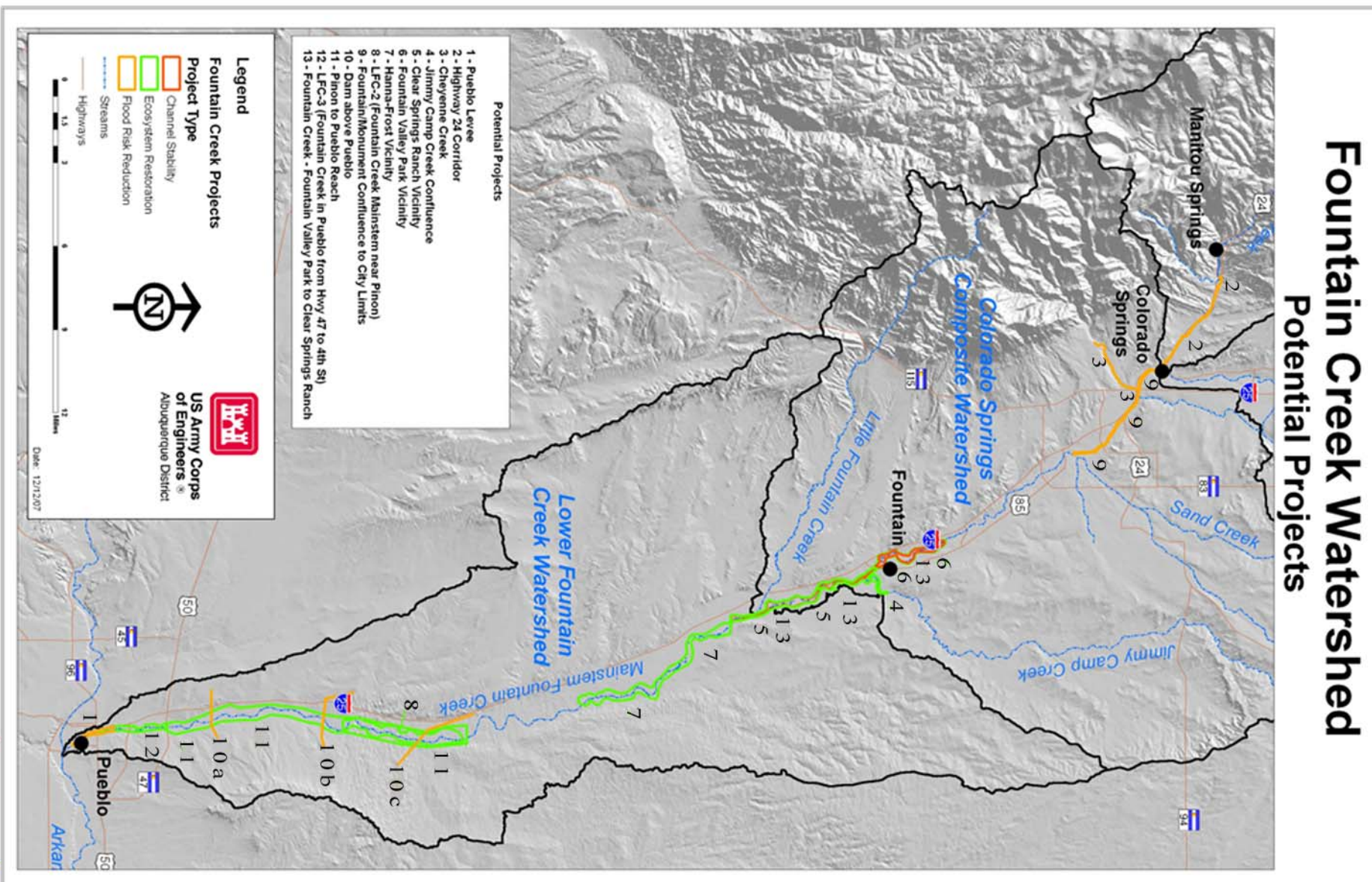
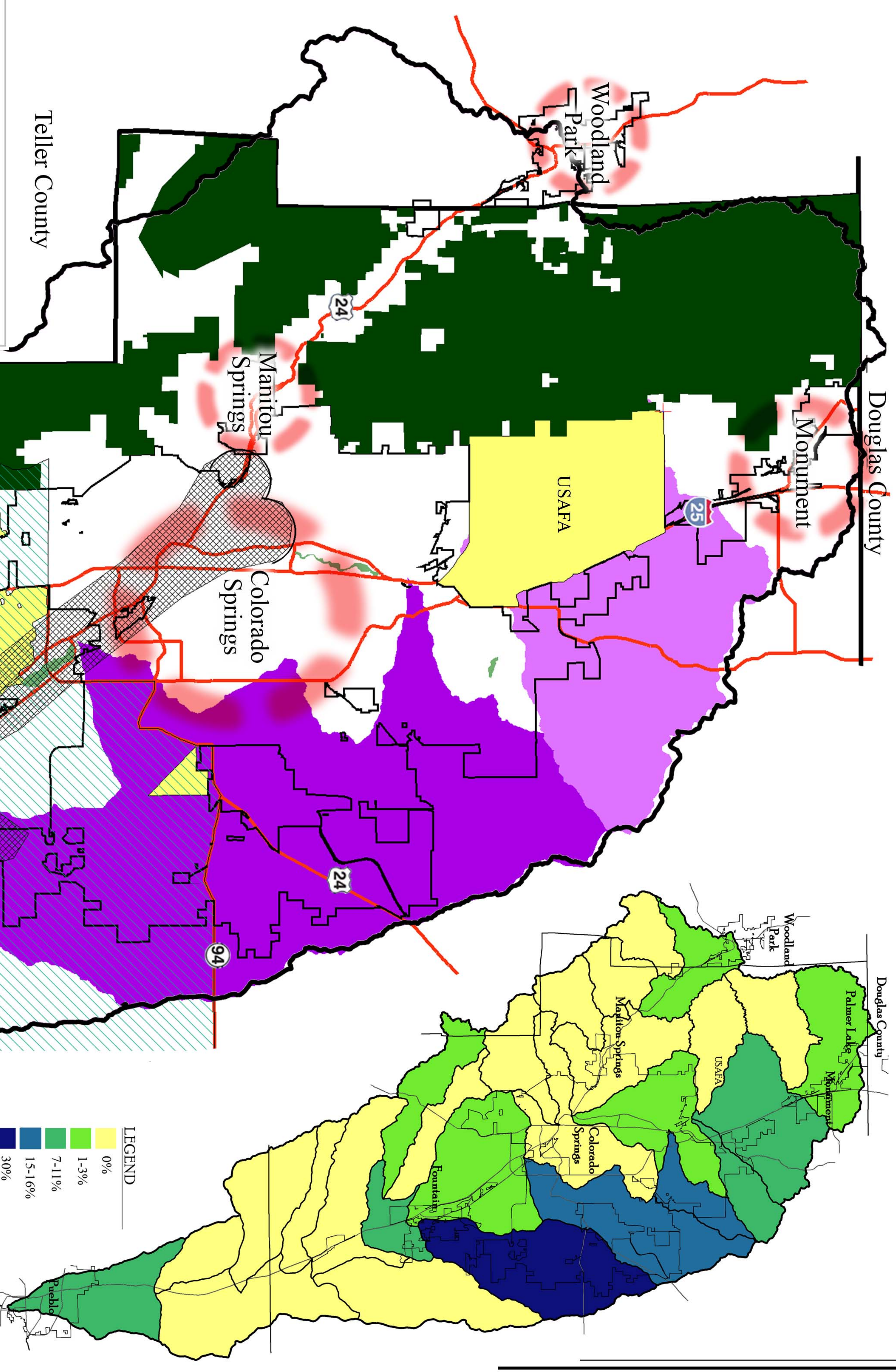
- PPACG
- El Paso County
- URS Corporation-2007
- Colorado Division of Wildlife
- C.W.B. HUC 12 Methodology

Impervious Surfaces Net % Change Map

North
 SCALE: 1"=2 MILES

Sept. 26, 2008
 THOMAS THOMAS

FOUNTAIN CREEK VISION TASK FORCE



URS CORP OF ENGINEERS STUDY (12/12/07)

LEGEND

- RETRO BMP AREAS- EXISTING URBAN
- LOW-IMPACT DEVELOPMENT OPPORTUNITIES
- PRIORITY 1 AREA
- PRIORITY 2 AREA
- NATIONAL FOREST AREA
- MILITARY
- DOWNSTREAM- HIGH IMPACT CORRIDOR RESTORATION, MITIGATION, STABILIZATION
- PEAK TO PRAIRIE
- HIGHWAYS

RESOURCES

- PPACG
- El Paso County
- URS Corporation-2007
- Colorado Division of Wildlife
- Pueblo County GIS

IMPERVIOUS SURFACES NET % CHANGE MAP

The Fountain Creek Watershed Impervious Surface Area and Watershed Health Analysis was prepared by PPACG in 2005 to explore the potential impact of growth and development trends on the watershed in the future. While the study was based on current development trends and available land use data in 2002, the findings only reflect a general estimate of the future patterns and rate of growth for the area. While municipal boundaries have been updated to show their current sizes and locations, the results of the underlying study have not. A new study would need to be done to produce current projections for imperviousness based on changing growth trends within the watershed. For more detailed information on the data reflected in this map, please refer to the full study: Fountain Creek Watershed, Impervious Surface Area and Watershed Health Analysis, Report, PPACG, October 2005.

POPULATION PROJECTIONS

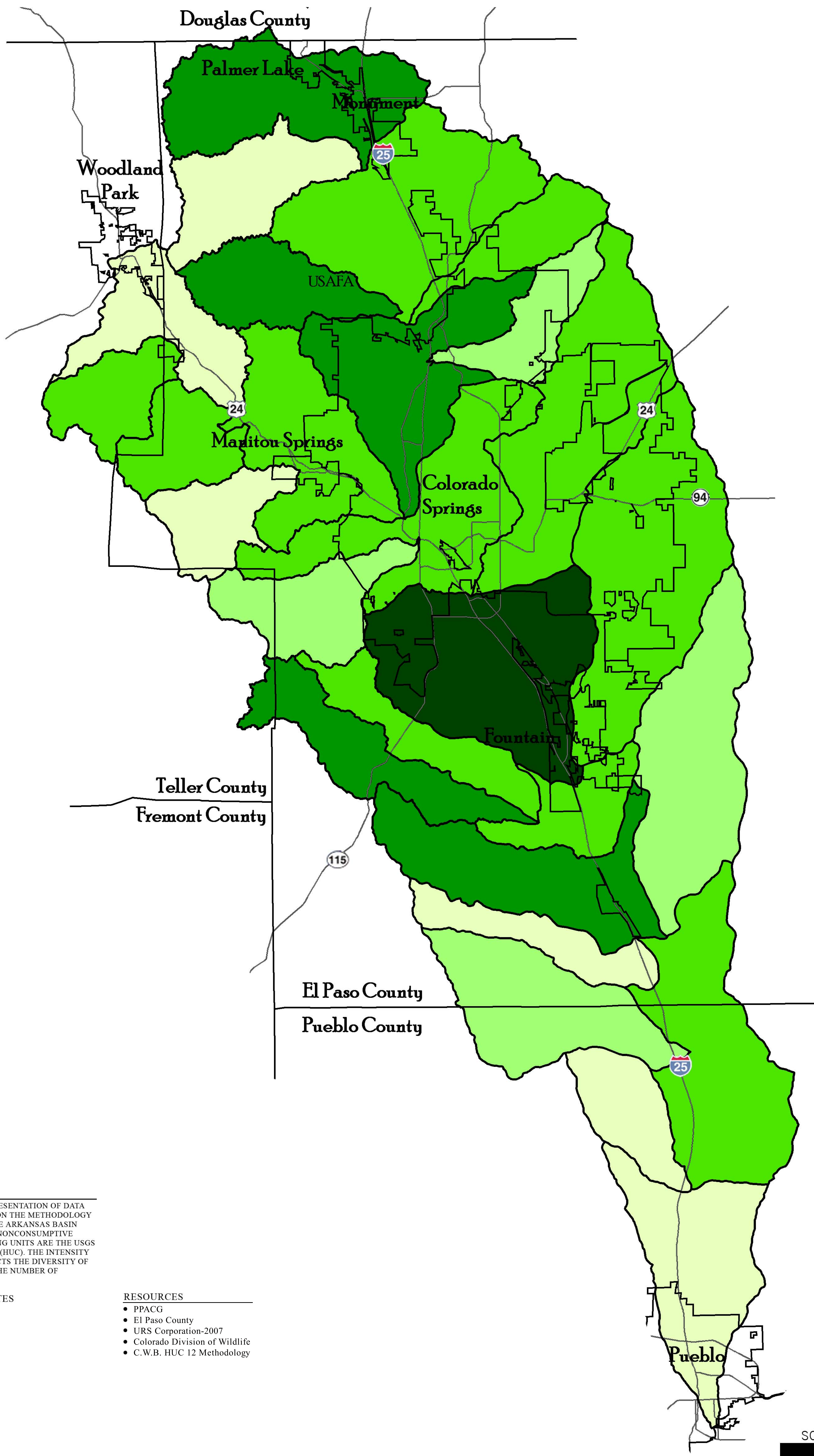
COUNTIES	JULY, 2005	JULY 2030
EL PASO	565,350	869,652
PUEBLO	151,104	229,628

SOURCE: STATE DEMOGRAPHERS OFFICE

- LEGEND**
- 0%
 - 1-3%
 - 7-11%
 - 15-16%
 - 30%

Land Use Vision Map

FOUNTAIN CREEK VISION TASK FORCE



LEGEND

THE FOLLOWING PRESENTATION OF DATA WAS ESTABLISHED ON THE METHODOLOGY FORMALIZED BY THE ARKANSAS BASIN ROUND TABLE FOR NONCONSUMPTIVE WATER USE. MAPPING UNITS ARE THE USGS HYDROLOGIC CODE (HUC). THE INTENSITY OF MAPPING REFLECTS THE DIVERSITY OF ATTRIBUTES, NOT THE NUMBER OF ACCURANCES.

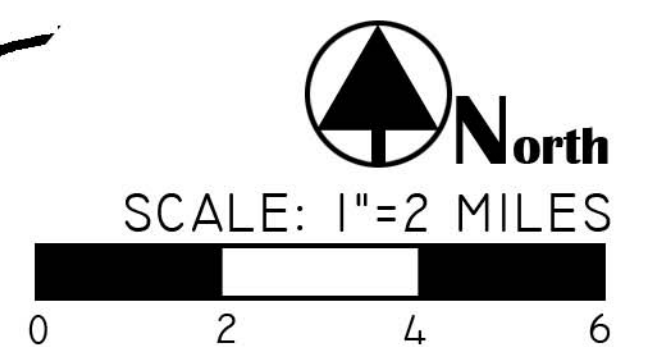
TOTAL ATTRIBUTES

- 11-13
- 14-16
- 17-19
- 20-22
- 23-25

RESOURCES

- PPACG
- El Paso County
- URS Corporation-2007
- Colorado Division of Wildlife
- C.W.B. HUC 12 Methodology

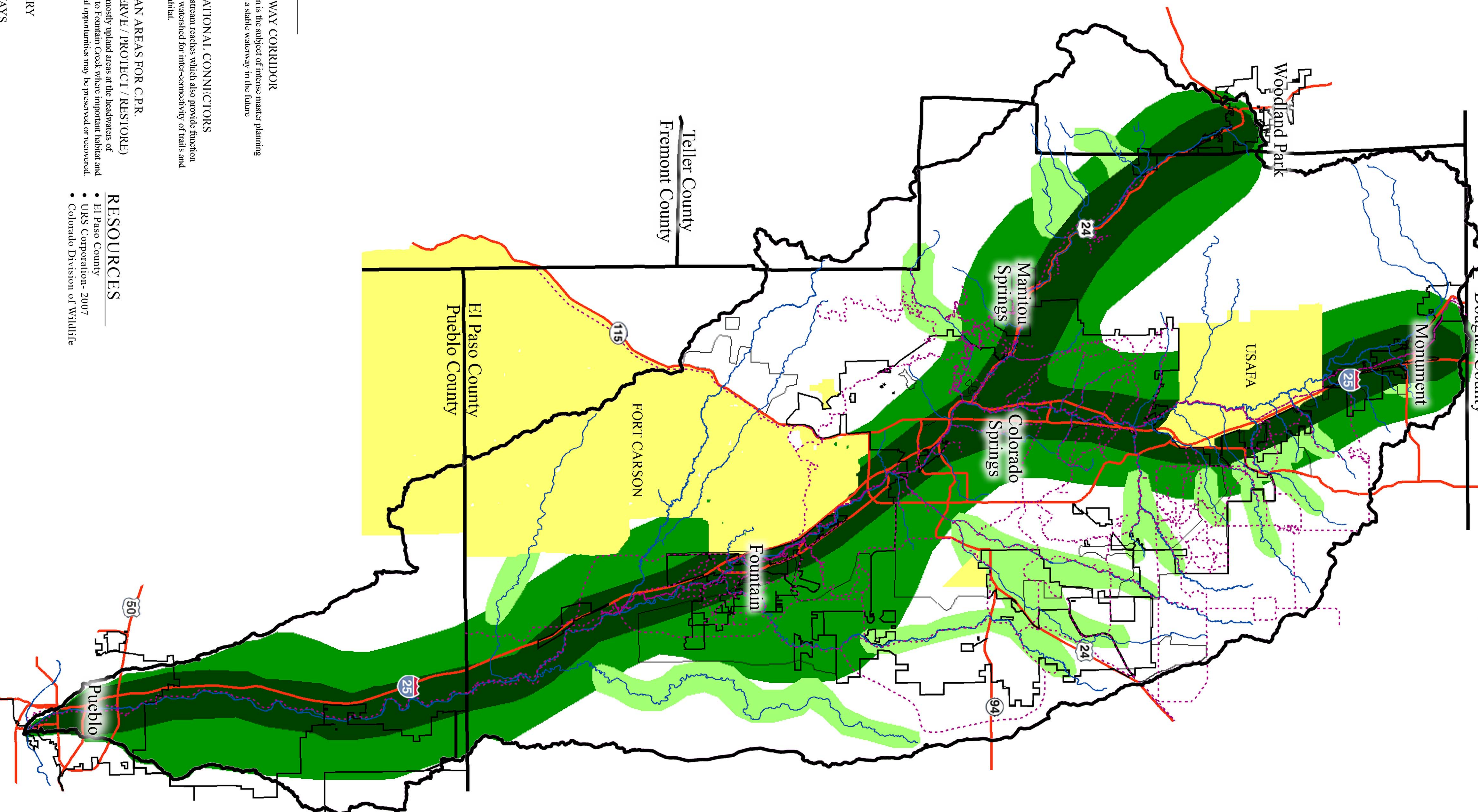
Positive Environmental Attributes Map



Sept. 26, 2008
THOMAS THOMAS

FOUNTAIN CREEK VISION TASK FORCE

Douglas County



LEGEND

- GREENWAY CORRIDOR**
This region is the subject of intense master planning to achieve a stable waterway in the future
- RECREATIONAL CONNECTORS**
These are stream reaches which also provide function within the watershed for inter-connectivity of trails and riparian habitat.
- RIPARIAN AREAS FOR C.P.R. (CONSERVE / PROTECT / RESTORE)**
These are mostly upland areas at the headwaters of tributaries to Fountain Creek where important habitat and recreational opportunities may be preserved or recovered.
- MILITARY**
- HIGHWAYS**
- MAJOR STREAMS**
- EXISTING AND PROPOSED TRAILS**

RESOURCES

- El Paso County
- URS Corporation- 2007
- Colorado Division of Wildlife

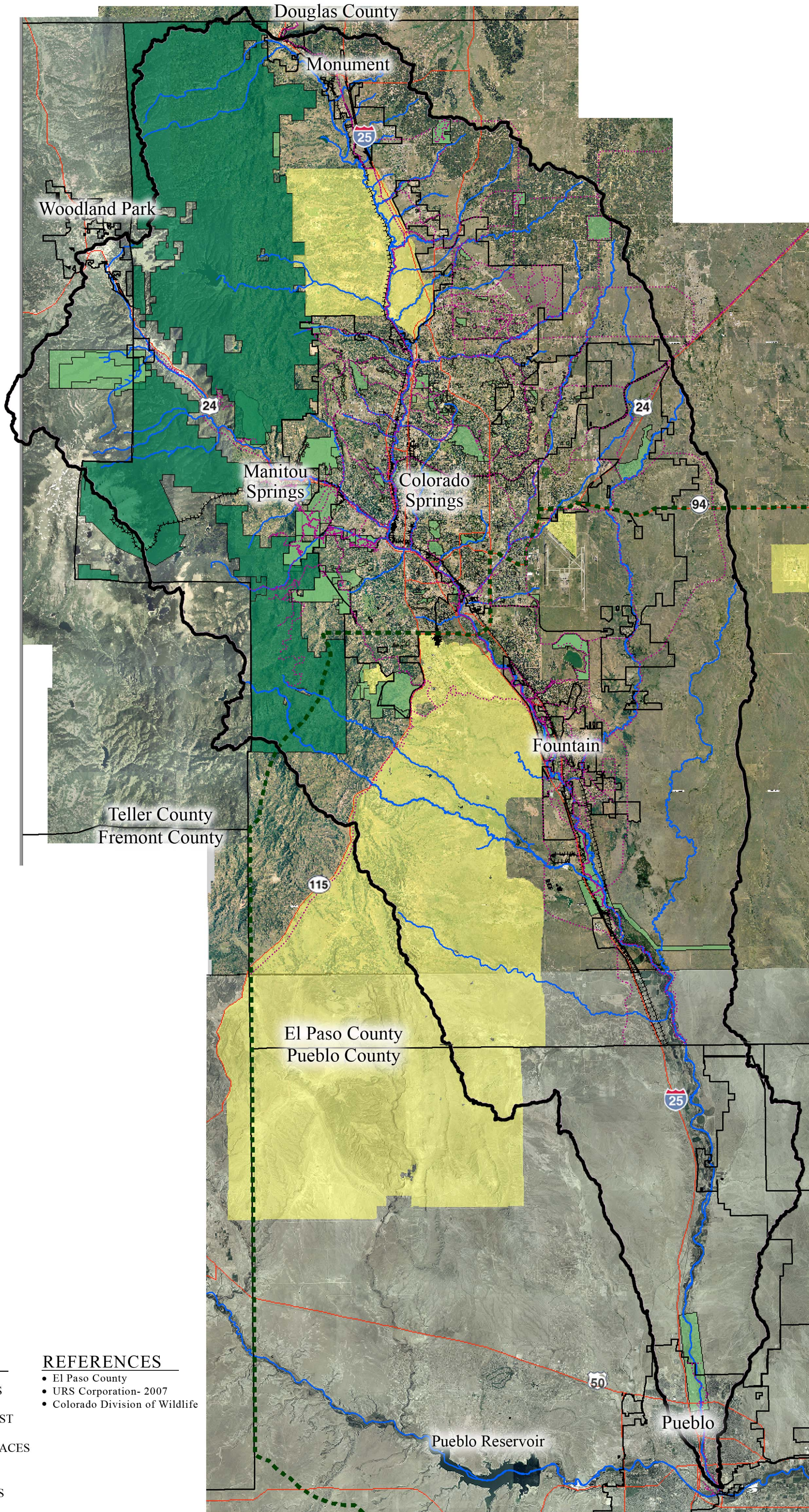
Vision Corridor Map



Sept 26, 2008

THOMAS THOMAS

FOUNTAIN CREEK VISION TASK FORCE



LEGEND

- MILITARY BASES
- NATIONAL FOREST
- PARKS / OPEN SPACES
- HIGHWAYS
- MAJOR STREAMS
- RAIL ROADS
- TRAILS
- PEAK TO PRAIRIE BOUNDARY

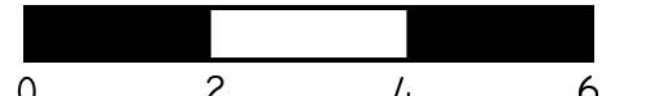
REFERENCES

- El Paso County
- URS Corporation- 2007
- Colorado Division of Wildlife

Watershed Base Map



SCALE: 1"=2 MILES



Sept 26, 2008

THOMAS THOMAS